

Introduction

Glog 2 is a single-use GPRS data logger that records real-time temperature, position and illumination, Quickly start by pulling the tab that ensure logistics efficiency and quality.

Overview



- | | |
|---|--|
| <p>① USB Charging Port
Charging: Green LED flashes.
Charged: LED is off.</p> | <p>② LED Indicator
Blue LED: Working indicator.
Red LED: Alarm indicator.</p> |
| <p>③ Battery Insulator Strip*</p> | <p>④ Serial Number</p> |

*Used to insulate the battery. Pull out the strip can activate the logger and starts

Specifications

Temperature Measuring Range	-30℃~55℃	Resolution: 0.1℃
Accuracy	0.5℃/0.9℉ (-20℃~40℃) ; 1℃/1.8℉ (others)	
Sensor	Internal NTC temperature sensor and light sensor	
Battery Life¹	20 days (5 minute logging interval and 60 minute upload interval)	
Start Delay²	30 minutes (customizable)	
Logging Interval³	5 minutes (customizable)	
Upload Interval⁴	60 minutes (customizable)	
Shelf Life	1 year stored at room temperature	
Storage Temperature	+15℃~30℃	
Protection Grade	IP65	

¹ Battery Life: The estimated operation days of the logger(based on certain conditions).

² Start Delay: After start delay time elapses, the activated logger will start logging.

³ Logging Interval: The interval between two readings after the logger starts logging.

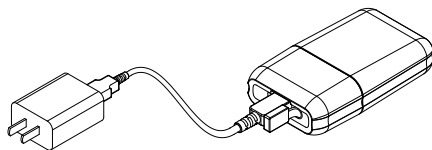
Elitech Cloud/APP

Glog 2 series, used with cloud portal and app, provide various functions including: create and manage shipment, view track, send alarm email, export trip data and graph (to PDF and EXCEL format), bulk operation, etc. See following operations:

- Visit Elitech Cloud portal: www.i-elitech.com/glog, register an account and login.
- Download Elitech app: Go to Google Play or App Store, search Elitech Geo, download and install the app. For more functions, please visit Elitech Cloud.

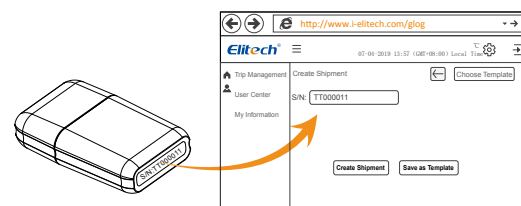
Operation

01



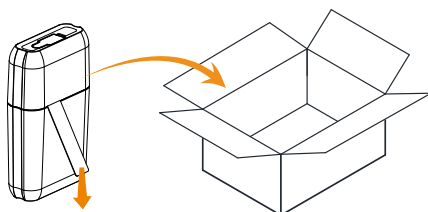
Please fully charge Glog 2 LT before start to ensure its battery level. Charging status: Green LED light flashes; Charged: The LED light off.

02



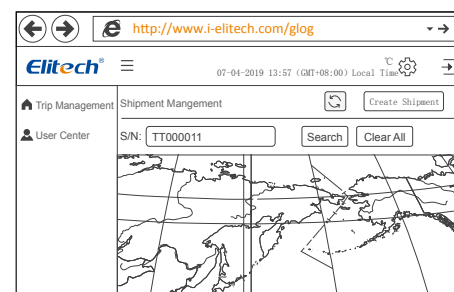
Open Elitech Cloud portal, click Create Shipment button on top right, type in the S/N at the bottom of the logger and other information, click Create Shipment at the bottom of the page to configure parameters.

03



Pull out the battery strip to activate logger, the blue LED light will flashes. Put it inside your goods/packages. It will starts logging after start delay time elapse.

04



Login Elitech Cloud Portal or Elitech Geo app to remotely view data/location, export report, bulk operation and etc. More functions can be find online.